

- Repair may include some erosion control layers
- Backfill using material from the mine site (screened and unscreened material) – Scott, are you ok with this?
- Compact and replace road surface

Duration and cost is tied to extent of damage. Black Diamond is estimating less than \$5k, but it really depends on what they dig up.

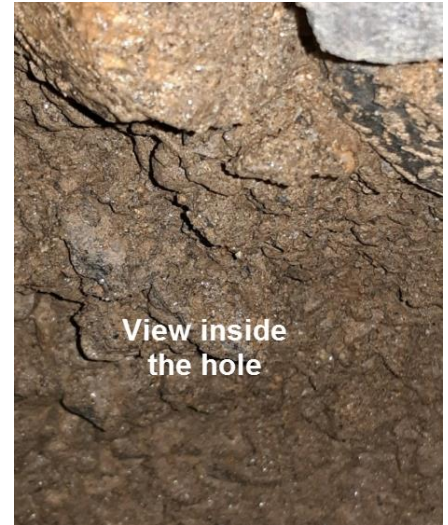
Let me know what you guys think.

Ted

From: Ted Bertele <TBERTELE@msn.com>
Sent: Wednesday, July 10, 2019 9:04 AM
Subject: Reported sink hole on RR Rd west of Pinchot

Dear Roosevelt Ridge Community

It was reported late last night that a sink hole has developed on RR Rd just west of Pinchot lane. The BOD dispatched Black Diamond to investigate this morning and they confirmed the existence of a cavity at least 7 ft deep. From the surface, it does not look large, however when they lowered a flashlight into the hole, it expand under the road surface. This hole is also in close proximity to existing power and gas lines. BD called in an emergency locate to find these utilities and will be working with the BOD to implement a solution.



Cones have been put in place, please stay away and exercise caution. The BOD will update the community as the situation evolves.

Thanks
 Ted Bertele



APPROVAL			
NAME	TITLE	DATE	SIGNATURE
TED BERTELE	DIRECTOR, RR HOA	7/10/2019	THEODORE BERTELE

THANK YOU FOR YOUR BUSINESS!