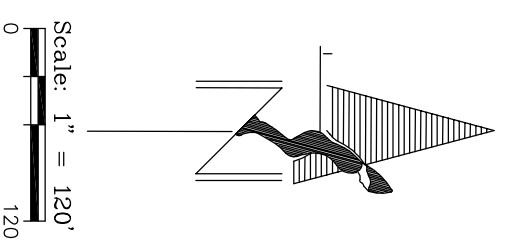


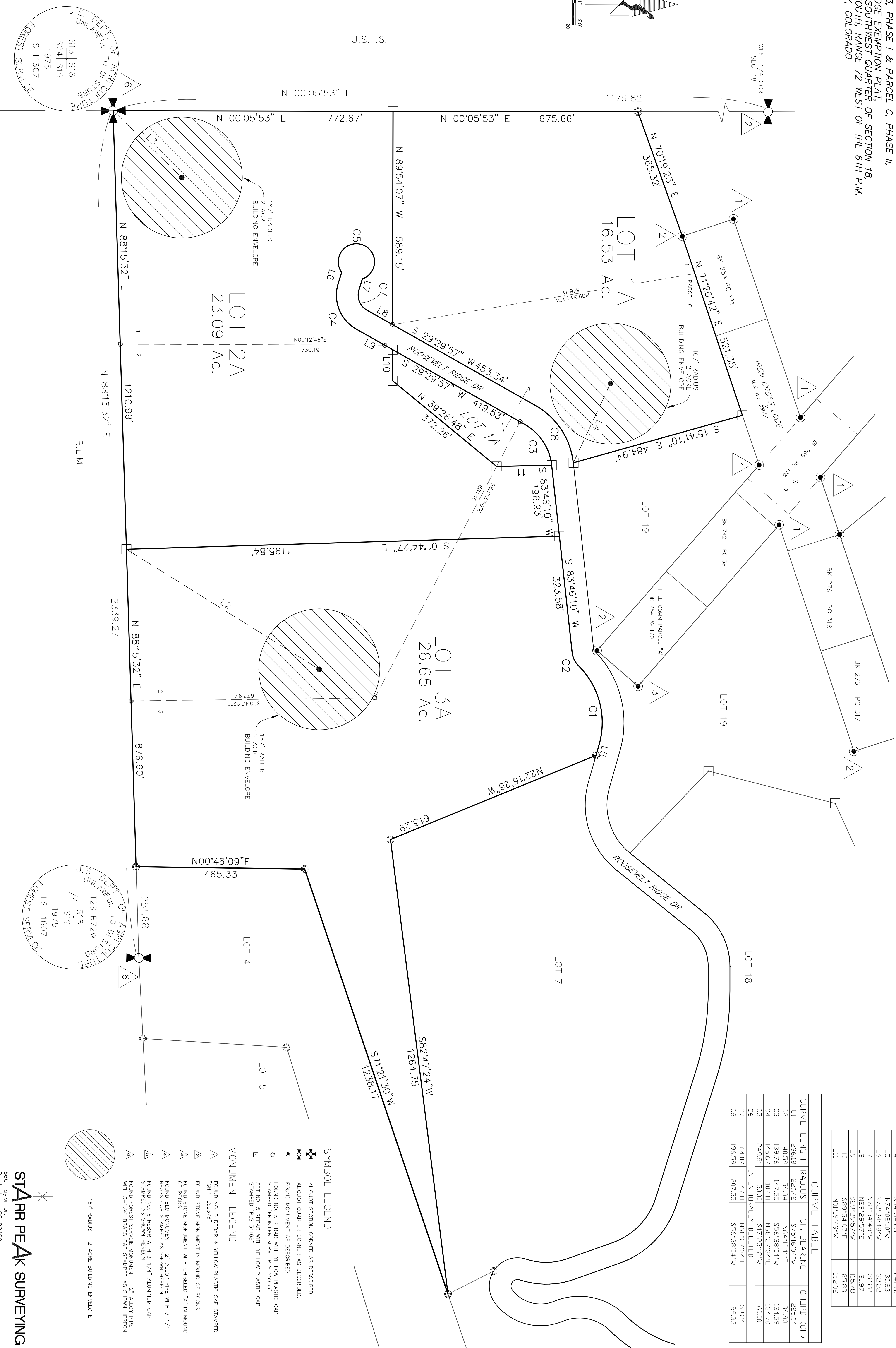
# BOUNDARY LINE ADJUSTMENT EXEMPTION PLAT

## BLA-20-

SHEET 2 of 2  
 LOTS 1, 2 & 3, PHASE I & PARCEL C, PHASE II,  
 ROOSEVELT RIDGE EXEMPTION PLAT OF SECTION 18,  
 LYING IN THE SOUTHWEST QUARTER OF SECTION 18,  
 TOWNSHIP 2 SOUTH, RANGE 72 WEST OF THE 6TH P.M.,  
 GILPIN COUNTY, COLORADO



U.S.F.S.



LINE	BEARING	LENGTH
L1	S40°57'26" W	150.16
L2	N31°54'15" E	626.94
L3	N44°11'27" E	264.63
L4	S64°54'25" E	241.70
L5	N74°02'10" W	30.83
L6	N72°34'48" W	32.22
L7	N72°34'48" W	32.22
L8	N29°29'57" E	81.97
L9	S29°29'57" W	115.78
L10	S89°54'07" E	85.83
L11	N01°19'49" W	152.02

CURVE	LENGTH	RADIUS	CH. BEARING	CHORD (CH)
C1	236.18	220.42	S75°16'04" W	225.04
C2	40.59	59.34	N64°10'11" E	39.80
C3	139.76	147.55	S56°38'04" W	134.59
C4	145.67	107.11	N68°27'34" E	134.70
C5	249.81	50.00	S17°25'12" W	60.00
C6			INTENTIONALLY DELETED	
C7	6.407	47.11	N68°27'34" E	59.24
C8	196.59	207.55	S56°38'04" W	189.33

### SYMBOL LEGEND

- ▲ ALIQUOT SECTION CORNER AS DESCRIBED.
- ⊠ ALIQUOT QUARTER CORNER AS DESCRIBED.
- FOUND MONUMENT AS DESCRIBED.
- FOUND NO. 5 REBAR WITH YELLOW PLASTIC CAP STAMPED "FRONTIER SURV. PLS 29953"
- SET NO. 5 REBAR WITH YELLOW PLASTIC CAP STAMPED "PLS 34168"

### MONUMENT LEGEND

- ▲ FOUND NO. 5 REBAR & YELLOW PLASTIC CAP STAMPED "SP. 152376"
- ▲ FOUND STONE MONUMENT IN MOUND OF ROCKS.
- ▲ FOUND STONE MONUMENT WITH OILSEED "X" IN MOUND OF ROCKS.
- ▲ FOUND BLM MONUMENT - 2" ALLOY PIPE WITH 3-1/4" BRASS CAP STAMPED AS SHOWN HEREON.
- ▲ FOUND NO. 6 REBAR WITH 3-1/4" ALUMINUM CAP STAMPED AS SHOWN HEREON.
- ▲ FOUND FOREST SERVICE MONUMENT - 2" ALLOY PIPE WITH 3-1/4" BRASS CAP STAMPED AS SHOWN HEREON.

167' RADIUS - 2 ACRE BUILDING ENVELOPE

