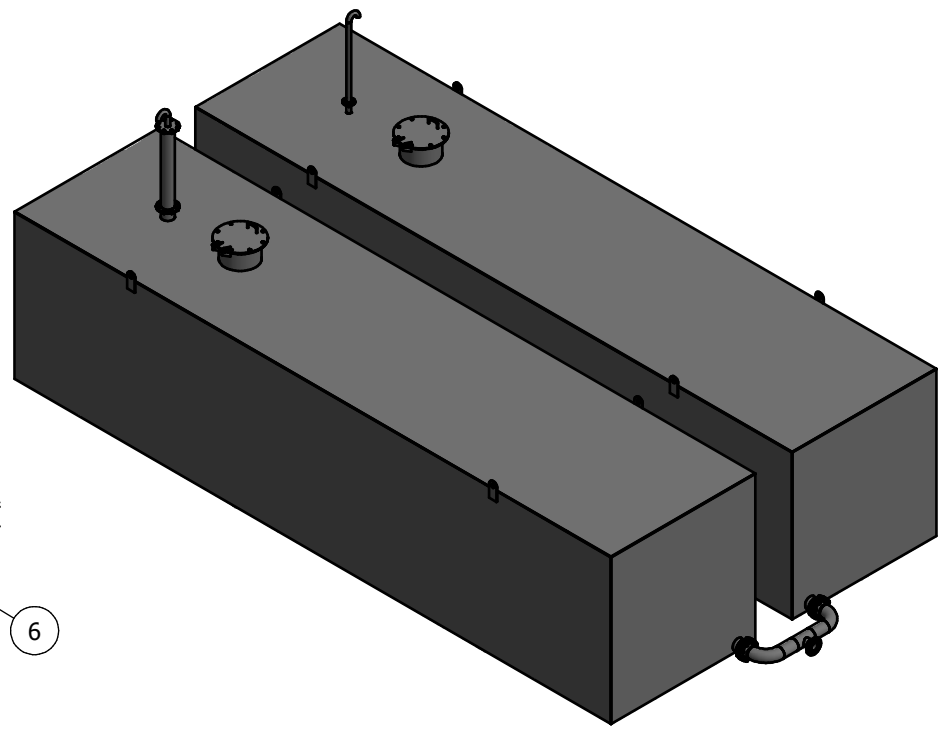


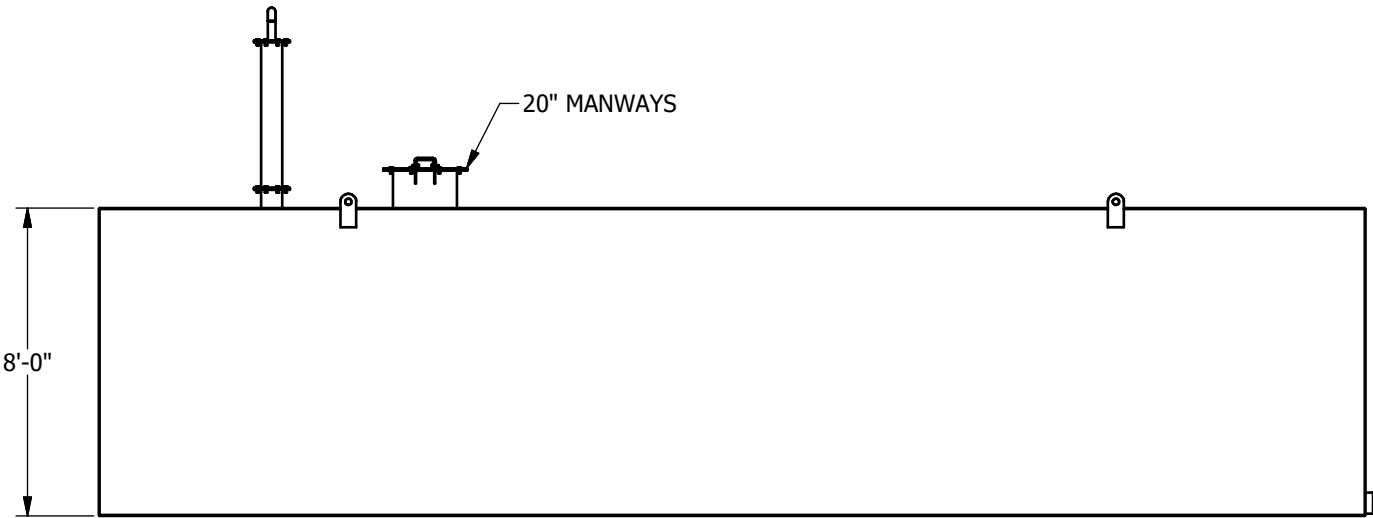
TOP VIEW
SCALE 1 / 60



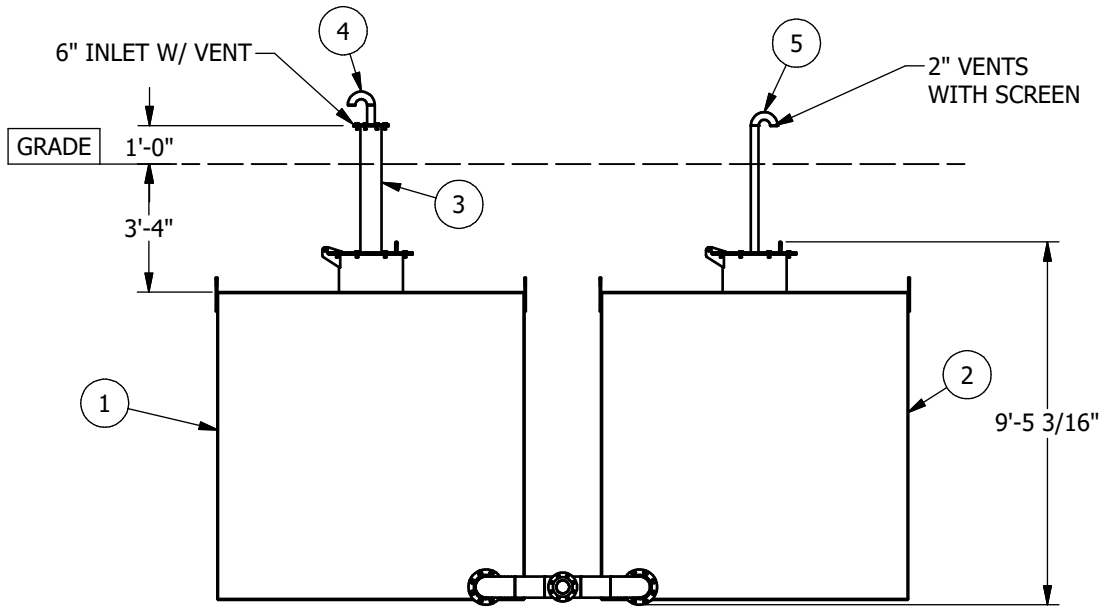
BILL OF MATERIAL		
ITEM	QTY	DESCRIPTION
1	1	TANK 1: PER DETAIL
2	1	TANK 2: PER DETAIL
3	1	6" INLET PIPE: PER DETAIL
4	1	6" INLET COVER WITH VENT: PER DETAIL
5	1	2" VENT PIPE: PER DETAIL
6	1	OUTLET PIPE: PER DETAIL
7	2	MANWAY COVER: PER DETAIL
8	2	ANODE MOUNT: PER DETAIL
9	2	20" GASKET: GARLOCK
10	2	6" GASKET: GARLOCK
11	1	2" GASKET: GARLOCK
12	2	GASKET: 6" CL150, 1/8" THK, 304SS SPIRAL WOUND WITH GRAPHITE, ASME B16.20
13	16	STUD BOLT: 3/4" X 4-1/2", ASTM A193 GR B7, W/ 2 A194 GR 2H NUTS, FOR 6" CL150 FLANGE
14	42	HEX BOLT: 1/2"-13 UNC X 1.5" LONG, WITH FLAT WASHER, LOCK WASHER, & NUT

QTY-1
(B.O.M. IS FOR A QTY OF 1)

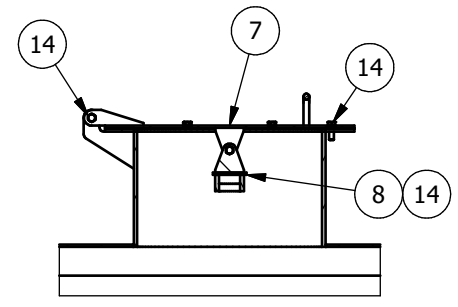
- NOTES:
- APPROX WEIGHT: 26,000 LBS
 - WPS 1A-17
 - AIR LEAK TEST
 - SURFACE FINISH:
 SANDBLAST: SSPC-SP6
 PRIMER: SW MACROPOXY 646 (1 COAT)
 TANKS: INSIDE & OUTSIDE PAINTED
 TOP COAT: NONE
 MIL THICKNESS: PER DATA SHEET



FRONT VIEW
SCALE 1 / 60



END VIEW
SCALE 1 / 60



SECTION A-A
SCALE 1 / 20

REVISIONS			
REV.	DESCRIPTION	BY	DATE
0	ISSUED FOR CONSTRUCTION	EE	8-6-20

GENERAL TOLERANCES:
(UNLESS OTHERWISE SPECIFIED)
 SINGLE PART FRACTIONAL: ±1/16"
 FABRICATION FRACTIONAL STACK-UP:
 0" - 48": ± 1/8"
 48" - 96": ± 3/16"
 OVER 96": ± 1/4"
 ANGLES: ± 1/2°
 WELD SIZES ARE MINIMUMS
 DEBURR & BREAK SHARP EDGES

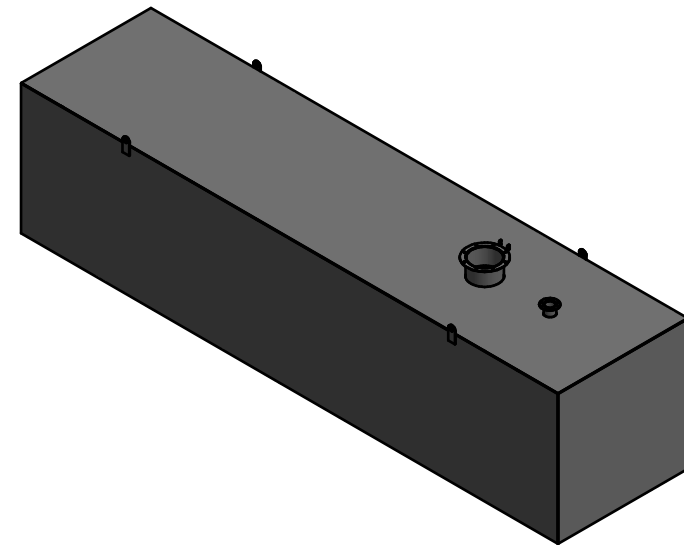
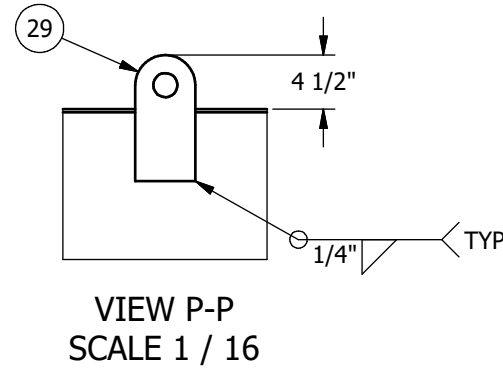
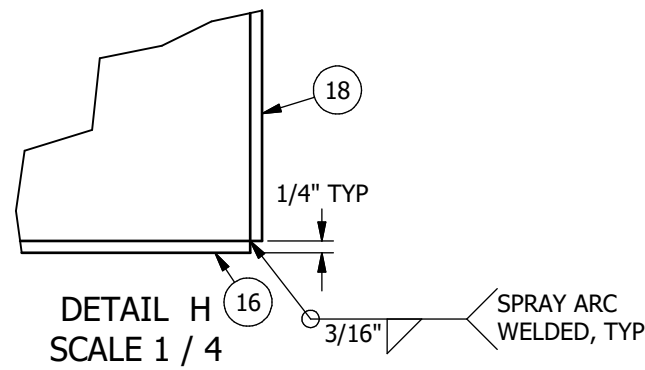
THIS DRAWING IS THE PROPERTY OF BLACKEAGLE FABRICATION LLC AND UNLESS GRANTED IN WRITING, DESIGN INFORMATION DISCLOSED WITHIN IS CONFIDENTIAL AND ALL RIGHTS, PATENTS AND OTHERWISE ARE RESERVED BY BLACKEAGLE FABRICATION LLC. DRAWINGS MUST BE SURRENDERED UPON REQUEST.
 © ALL RIGHTS RESERVED.

BLAKEAGLE
FABRICATION, LLC

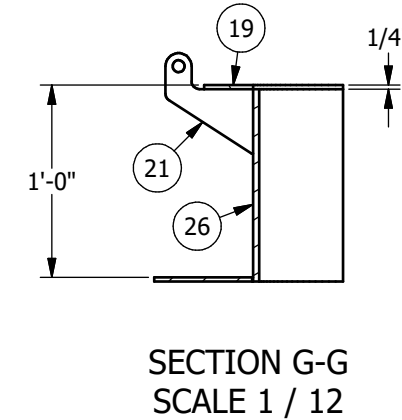
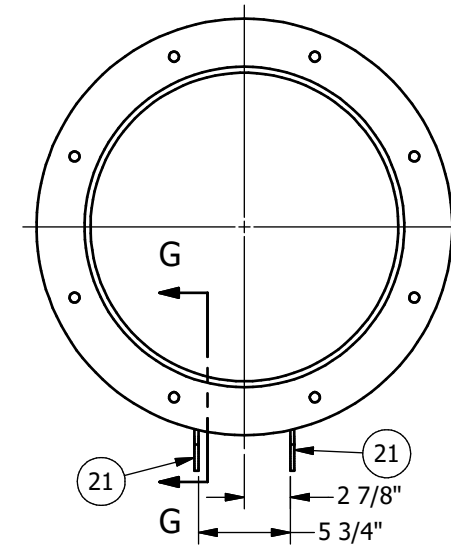
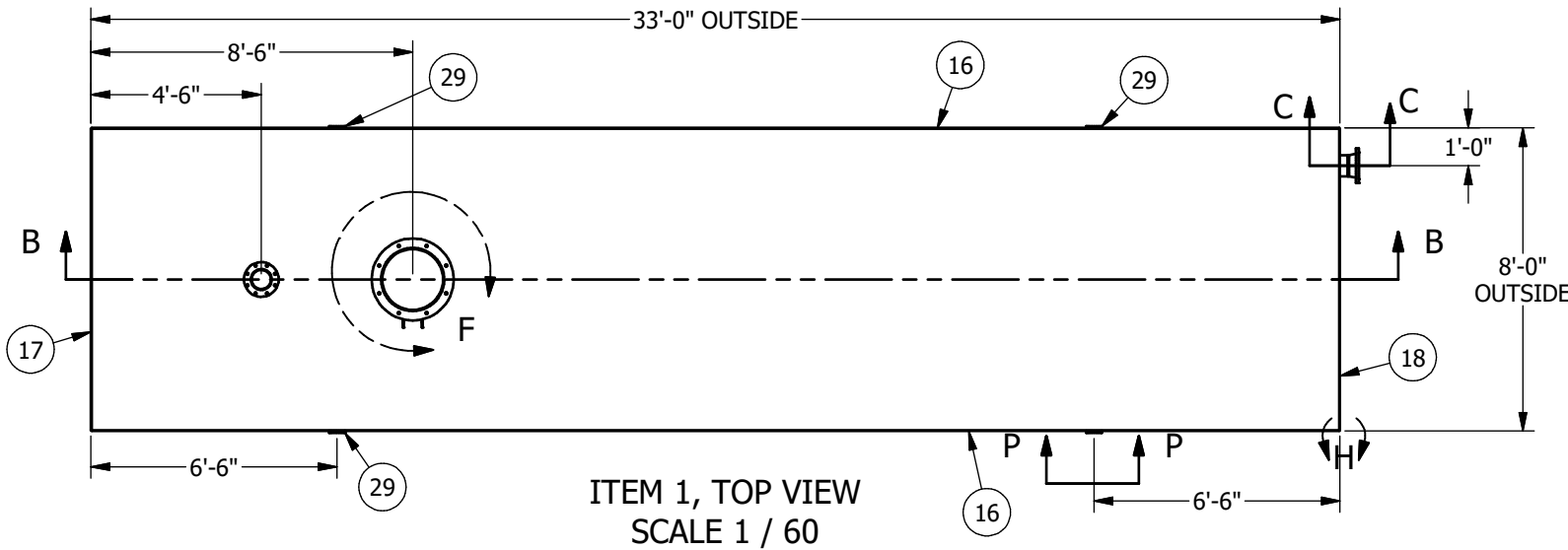
230 COMMERCE DRIVE, BERTHOUD CO, 80513
 PHONE: (970) 532-0600 - FAX: (970) 532-4846

DRAWING APPROVALS				
APP'VD BY:	CLIENT	PROJECT MGR.	PROJECT ENG.	QUALITY CONTROL
DATE				

WATER STORAGE TANK			
DRAWN DATE:	JOBBOSS #:	DRAWING #:	REV
6/9/2020	220150.11	220150 CS-101	0
DRAWN BY: E. ELLIS	ENGINEER:	SHEET 1 OF 8	

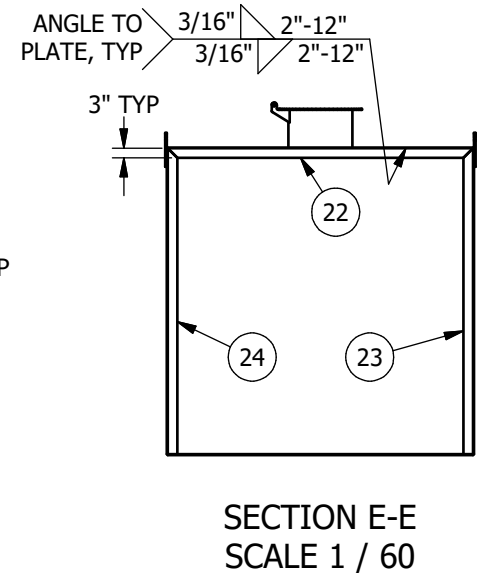
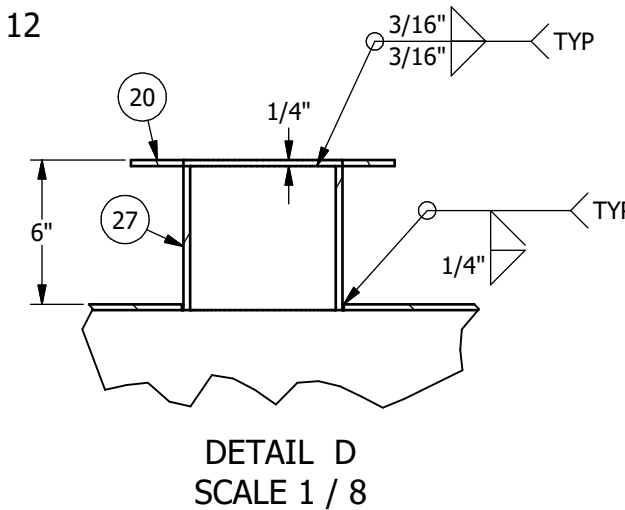
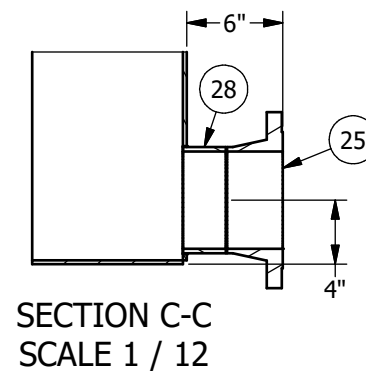
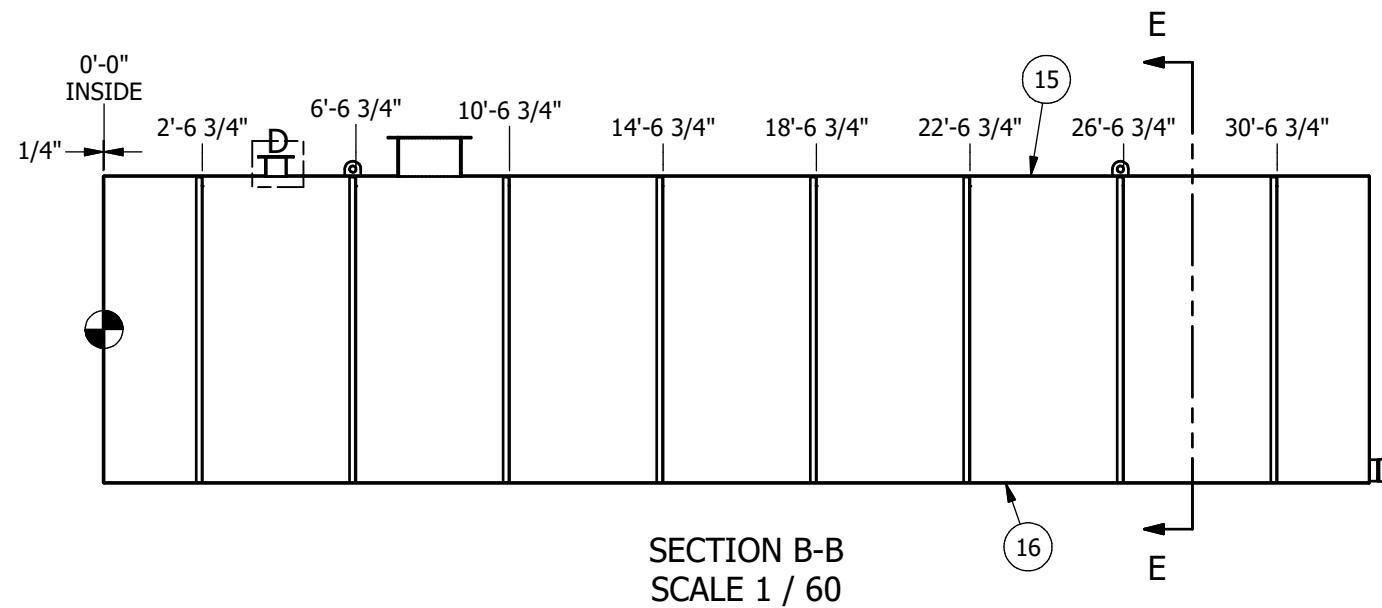


BILL OF MATERIAL			
ITEM	QTY	DESCRIPTION	LENGTH
15	1	PLATE: 1/4", A-36, PER DETAIL	
16	3	PLATE: 1/4" X 95-1/2" X 395-1/2", A-36	
17	1	PLATE: 1/4" X 95-1/2" X 95-1/2", A-36	
18	1	PLATE: 1/4", A-36, PER DETAIL	
19	1	PLATE: 1/4", A-36, PER DETAIL	
20	1	PLATE: 1/4", A-36, PER DETAIL	
21	2	PLATE: 1/4", A-36, PER DETAIL	
22	8	ANGLE: L3" x 2" x 3/16", ASTM A-36, PER DETAIL	7'-11 1/2"
23	8	ANGLE: L3" x 2" x 3/16", ASTM A-36, PER DETAIL	7'-11 1/2"
24	8	ANGLE: L3" x 2" x 3/16", ASTM A-36, PER DETAIL	7'-11 1/2"
25	1	FLANGE: 6" CL150 RFWN, SCH STD, ASME SA-105, ASME B16.5	
26	1	PIPE: 20" SCH STD (0.375" WALL), ASTM A-106B, SMLS	1'-0"
27	1	PIPE: 6" SCH STD (0.28" WALL), ASTM A-106B, SMLS	6"
28	1	PIPE: 6" SCH STD (0.28" WALL), ASTM A-106B, SMLS	2 11/16"
29	4	LIFT LUG: PLATE, 1/2", A-36, PER DETAIL	



QTY-1
(B.O.M. IS FOR A QTY OF 1)

NOTES:
1. APPROX WEIGHT: 12,800 LBS
2. WPS 1A-17



REVISIONS

REV.	DESCRIPTION	BY	DATE
0	ISSUED FOR CONSTRUCTION	EE	

GENERAL TOLERANCES:
(UNLESS OTHERWISE SPECIFIED)
SINGLE PART FRACTIONAL: ±1/16"
FABRICATION FRACTIONAL STACK-UP:
0" - 48": ± 1/8"
48" - 96": ± 3/16"
OVER 96": ± 1/4"
ANGLES: ± 1/2°
WELD SIZES ARE MINIMUMS
DEBURR & BREAK SHARP EDGES

THIS DRAWING IS THE PROPERTY OF BLACKEAGLE FABRICATION LLC AND UNLESS GRANTED IN WRITING, DESIGN INFORMATION DISCLOSED WITHIN IS CONFIDENTIAL AND ALL RIGHTS, PATENTS AND OTHERWISE ARE RESERVED BY BLACKEAGLE FABRICATION LLC. DRAWINGS MUST BE SURRENDERED UPON REQUEST.
© ALL RIGHTS RESERVED.

BLACKEAGLE
FABRICATION, LLC



230 COMMERCE DRIVE, BERTHOUD CO, 80513
PHONE: (970) 532-0600 - FAX: (970) 532-4846

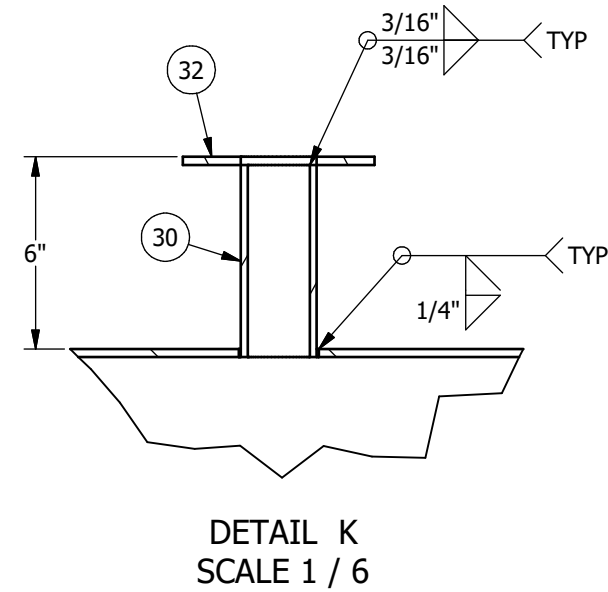
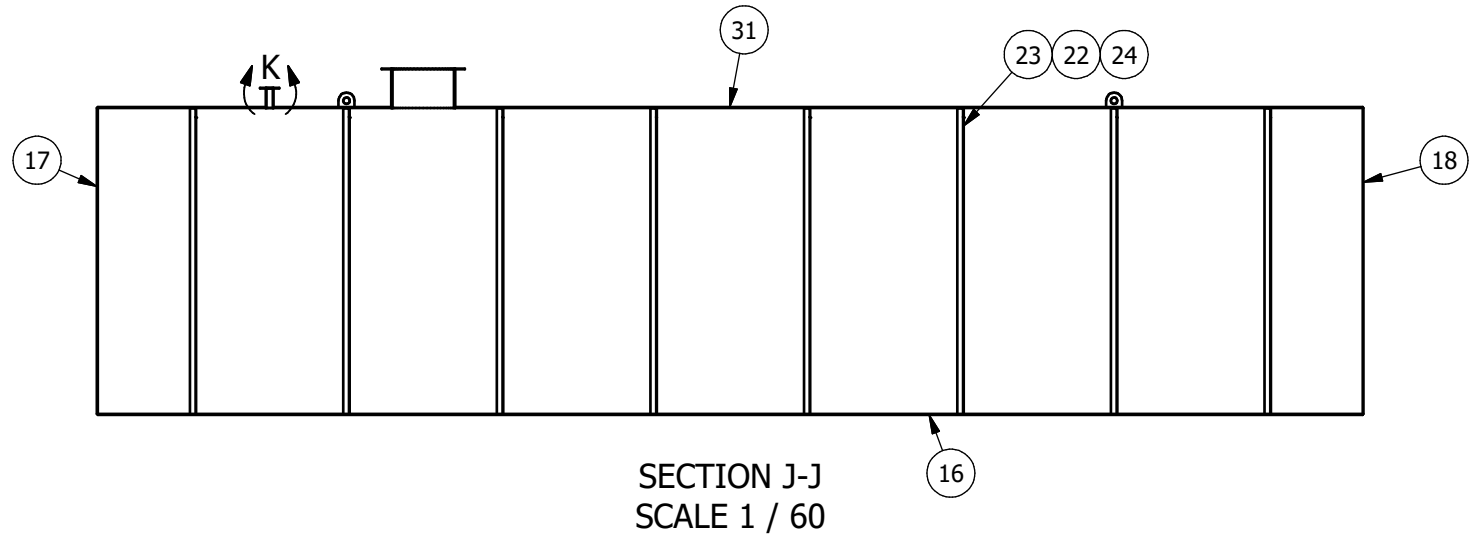
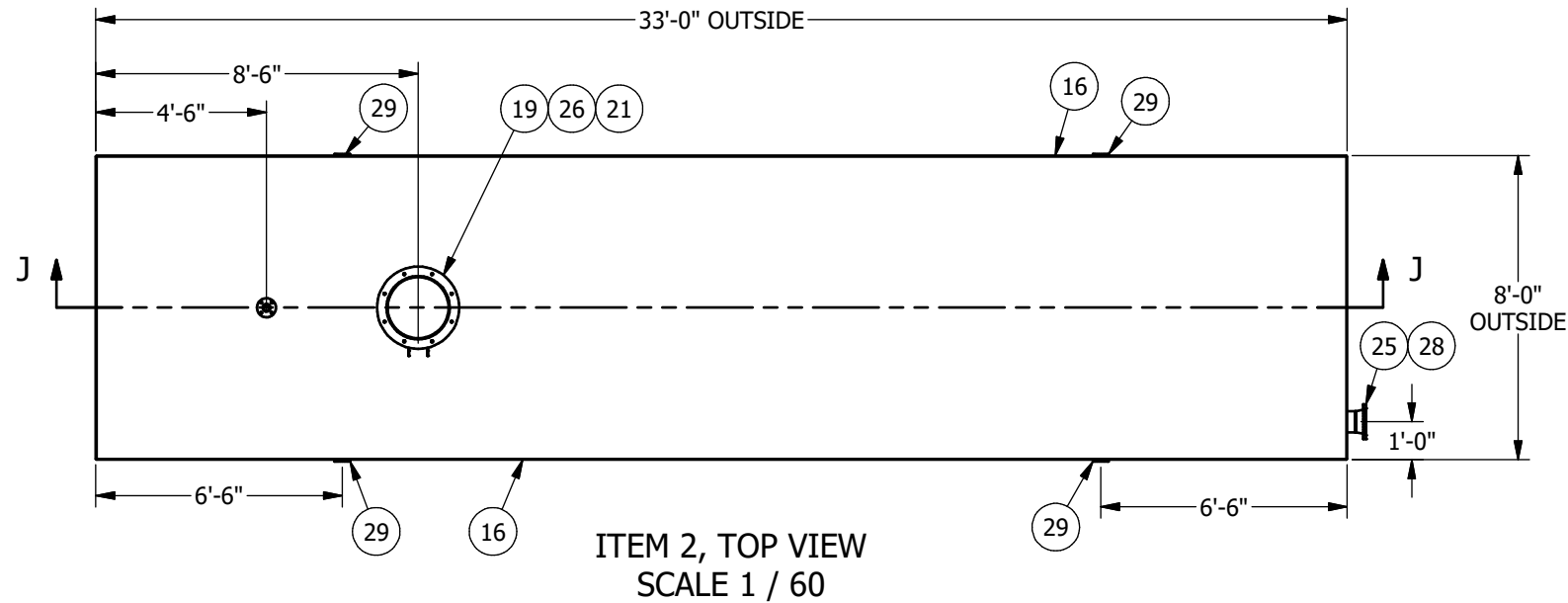
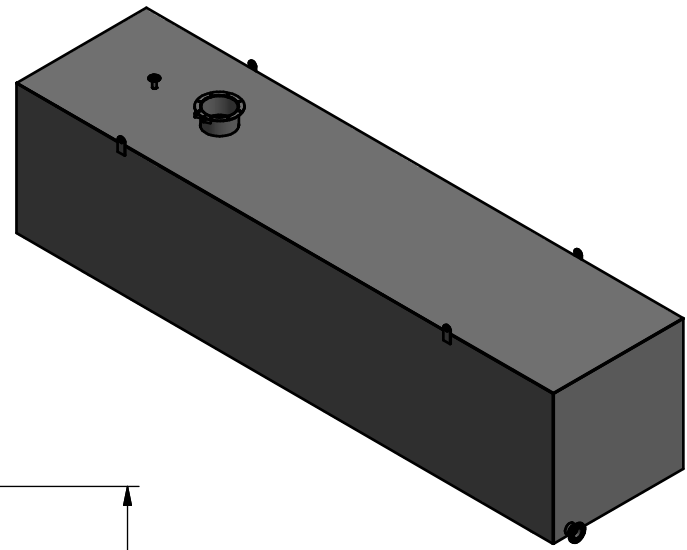
DRAWING APPROVALS

APP'D BY:	CLIENT	PROJECT MGR.	PROJECT ENG.	QUALITY CONTROL

DRAWN DATE:	JOBBOSS #:	DRAWING #:	REV
6/9/2020	220150.11	220150 CS-101	0
DRAWN BY: E. ELLIS	ENGINEER:	SHEET 2 OF 8	

WATER STORAGE TANK

BILL OF MATERIAL			
ITEM	QTY	DESCRIPTION	LENGTH
16	3	PLATE: 1/4" X 95-1/2" X 395-1/2", A-36	
17	1	PLATE: 1/4" X 95-1/2" X 95-1/2", A-36	
18	1	PLATE: 1/4", A-36, PER DETAIL	
19	1	PLATE: 1/4", A-36, PER DETAIL	
21	2	PLATE: 1/4", A-36, PER DETAIL	
22	8	ANGLE: L3" x 2" x 3/16", ASTM A-36, PER DETAIL	7'-11 1/2"
23	8	ANGLE: L3" x 2" x 3/16", ASTM A-36, PER DETAIL	7'-11 1/2"
24	8	ANGLE: L3" x 2" x 3/16", ASTM A-36, PER DETAIL	7'-11 1/2"
25	1	FLANGE: 6" CL.150 RFWN, SCH STD, ASME SA-105, ASME B16.5	
26	1	PIPE: 20" SCH STD (0.375" WALL), ASTM A-106B, SMLS	1'-0"
28	1	PIPE: 6" SCH STD (0.28" WALL), ASTM A-106B, SMLS	2 11/16"
29	4	LIFT LUG: PLATE, 1/2", A-36, PER DETAIL	
30	1	PIPE: 2" SCH XH (0.218" WALL), ASTM A-106B, SMLS	6"
31	1	PLATE: 1/4", A-36, PER DETAIL	
32	1	PLATE: 1/4", A-36, PER DETAIL	



QTY-1

(B.O.M. IS FOR A QTY OF 1)

- NOTES:
 1. APPROX WEIGHT: 12,800 LBS
 2. WPS 1A-17

REVISIONS			
REV.	DESCRIPTION	BY	DATE
0	ISSUED FOR CONSTRUCTION	EE	

GENERAL TOLERANCES:
 (UNLESS OTHERWISE SPECIFIED)
 SINGLE PART FRACTIONAL: ±1/16"
 FABRICATION FRACTIONAL STACK-UP:
 0" - 48": ± 1/8"
 48" - 96": ± 3/16"
 OVER 96": ± 1/4"
 ANGLES: ± 1/2°
 WELD SIZES ARE MINIMUMS
 DEBURR & BREAK SHARP EDGES

THIS DRAWING IS THE PROPERTY OF BLACKEAGLE FABRICATION LLC AND UNLESS GRANTED IN WRITING, DESIGN INFORMATION DISCLOSED WITHIN IS CONFIDENTIAL AND ALL RIGHTS, PATENTS AND OTHERWISE ARE RESERVED BY BLACKEAGLE FABRICATION LLC. DRAWINGS MUST BE SURRENDERED UPON REQUEST.
 © ALL RIGHTS RESERVED.

BLAKEAGLE
 FABRICATION, LLC

230 COMMERCE DRIVE, BERTHOUD CO, 80513
 PHONE: (970) 532-0600 - FAX: (970) 532-4846

DRAWING APPROVALS				
APPV'D BY:	CLIENT	PROJECT MGR.	PROJECT ENG.	QUALITY CONTROL
DATE				

WATER STORAGE TANK			
DRAWN DATE:	JOBBOSS #:	DRAWING #:	REV
6/9/2020	220150.11	220150 CS-101	0
DRAWN BY: E. ELLIS	ENGINEER:	SHEET 3 OF 8	

BILL OF MATERIAL

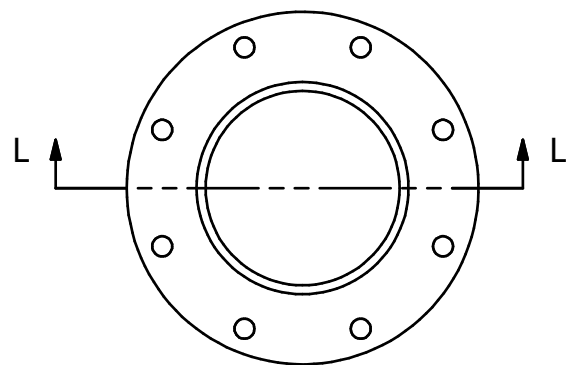
ITEM	QTY	DESCRIPTION	LENGTH
20	2	PLATE: 1/4", A-36, PER DETAIL	
33	1	PIPE: 6" SCH STD (0.28" WALL), ASTM A-106B, SMLS	3'-9 3/8"

QTY-1

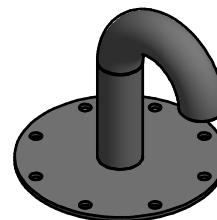
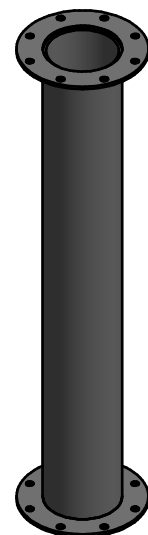
(B.O.M. IS FOR A QTY OF 1)

NOTES:

1. APPROX WEIGHT: 85 LBS
2. WPS 1A-17



ITEM 3
SCALE 1 / 6



BILL OF MATERIAL

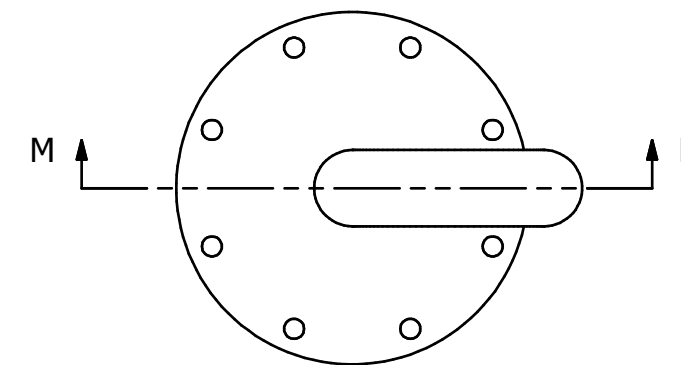
ITEM	QTY	DESCRIPTION	LENGTH
34	1	PLATE: 1/4", A-36, PER DETAIL	
35	1	PIPE: 2" SCH XH (0.218" WALL), ASTM A-106B, SMLS	6"
36	1	RETURN: 2" SCH XH, 180°, ASTM A-234 WPB	
37	1	MESH: 2-1/8" OD	

QTY-1

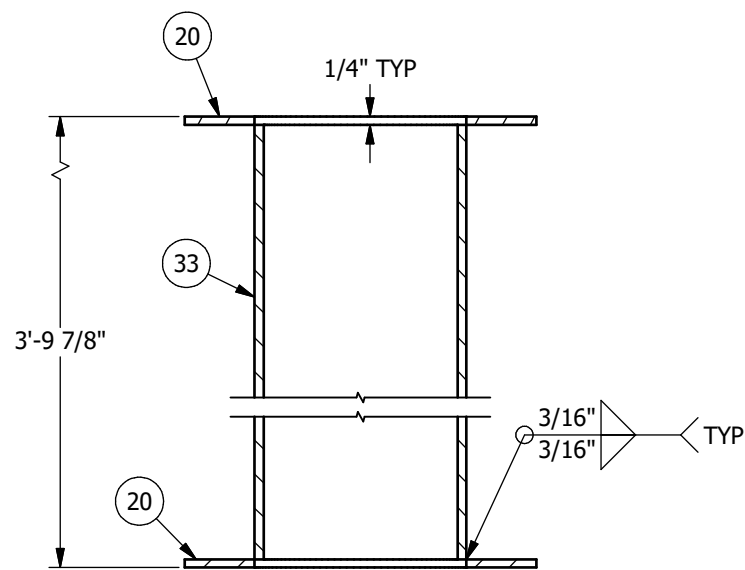
(B.O.M. IS FOR A QTY OF 1)

NOTES:

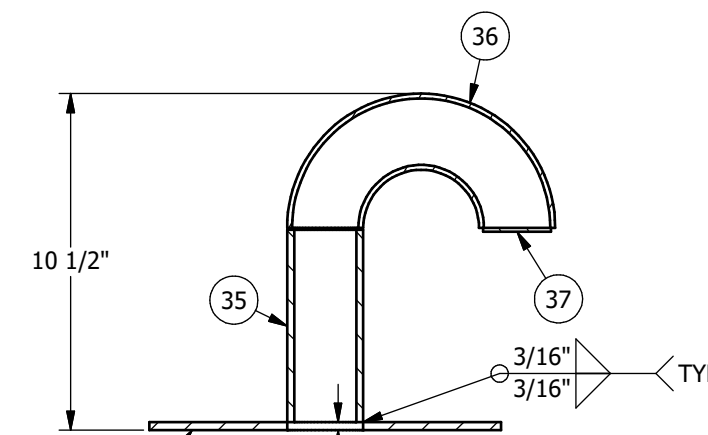
1. APPROX WEIGHT: 12 LBS
2. WPS 1A-17



ITEM 4
SCALE 1 / 6



SECTION L-L
SCALE 1 / 6



SECTION M-M
SCALE 1 / 6

REVISIONS

REV.	DESCRIPTION	BY	DATE
0	ISSUED FOR CONSTRUCTION	EE	

GENERAL TOLERANCES:
(UNLESS OTHERWISE SPECIFIED)
SINGLE PART FRACTIONAL: ±1/16"
FABRICATION FRACTIONAL STACK-UP:
0" - 48": ± 1/8"
48" - 96": ± 3/16"
OVER 96": ± 1/4"
ANGLES: ± 1/2°
WELD SIZES ARE MINIMUMS
DEBURR & BREAK SHARP EDGES

THIS DRAWING IS THE PROPERTY OF BLACKEAGLE FABRICATION LLC AND UNLESS GRANTED IN WRITING, DESIGN INFORMATION DISCLOSED WITHIN IS CONFIDENTIAL AND ALL RIGHTS, PATENTS AND OTHERWISE ARE RESERVED BY BLACKEAGLE FABRICATION LLC. DRAWINGS MUST BE SURRENDERED UPON REQUEST.
© ALL RIGHTS RESERVED.



230 COMMERCE DRIVE, BERTHOUD CO, 80513
PHONE: (970) 532-0600 - FAX: (970) 532-4846

DRAWING APPROVALS

APP'D BY:	CLIENT	PROJECT MGR.	PROJECT ENG.	QUALITY CONTROL
DATE				

WATER STORAGE TANK

DRAWN DATE:	JOBBOSS #:	DRAWING #:	REV
6/9/2020	220150.11	220150 CS-101	0
DRAWN BY:	E. ELLIS	ENGINEER:	SHEET 4 OF 8

BILL OF MATERIAL

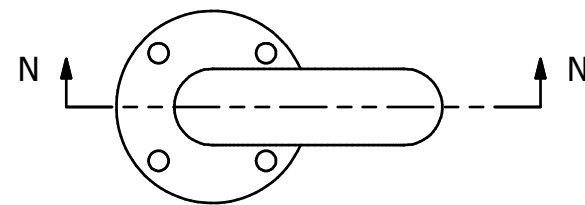
ITEM	QTY	DESCRIPTION	LENGTH
32	1	PLATE: 1/4", A-36, PER DETAIL	
36	1	RETURN: 2" SCH XH, 180°, ASTM A-234 WPB	
37	1	MESH: 2-1/8" OD	
38	1	PIPE: 2" SCH STD (0.154" WALL), ASTM A-106B, SMLS	3'-9 9/16"

QTY-1

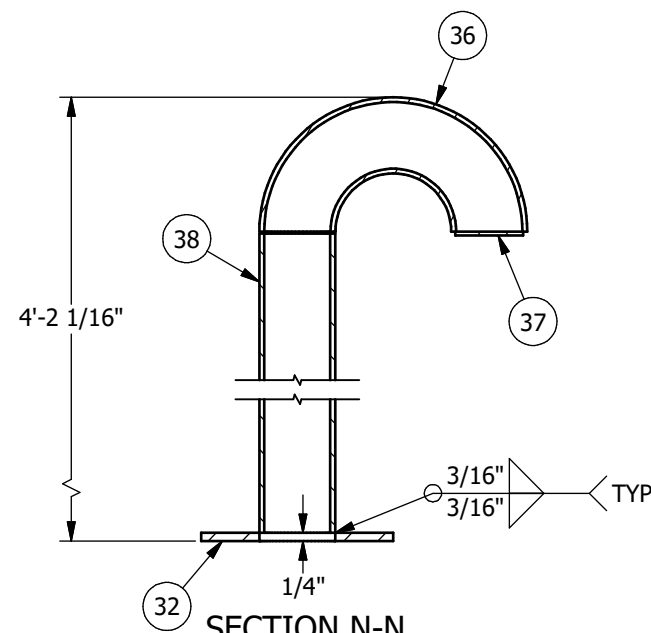
(B.O.M. IS FOR A QTY OF 1)

NOTES:

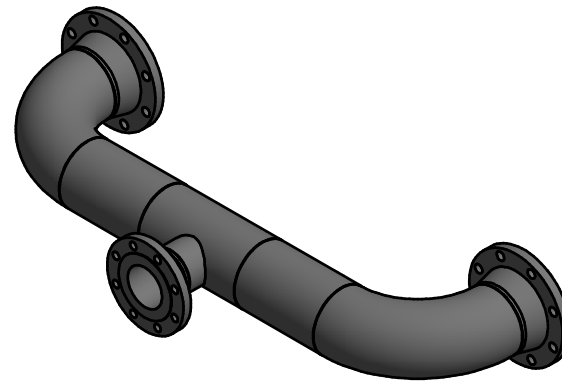
1. APPROX WEIGHT: 20 LBS
2. WPS 1A-17



ITEM 5
SCALE 1 / 6



SECTION N-N
SCALE 1 / 6



BILL OF MATERIAL

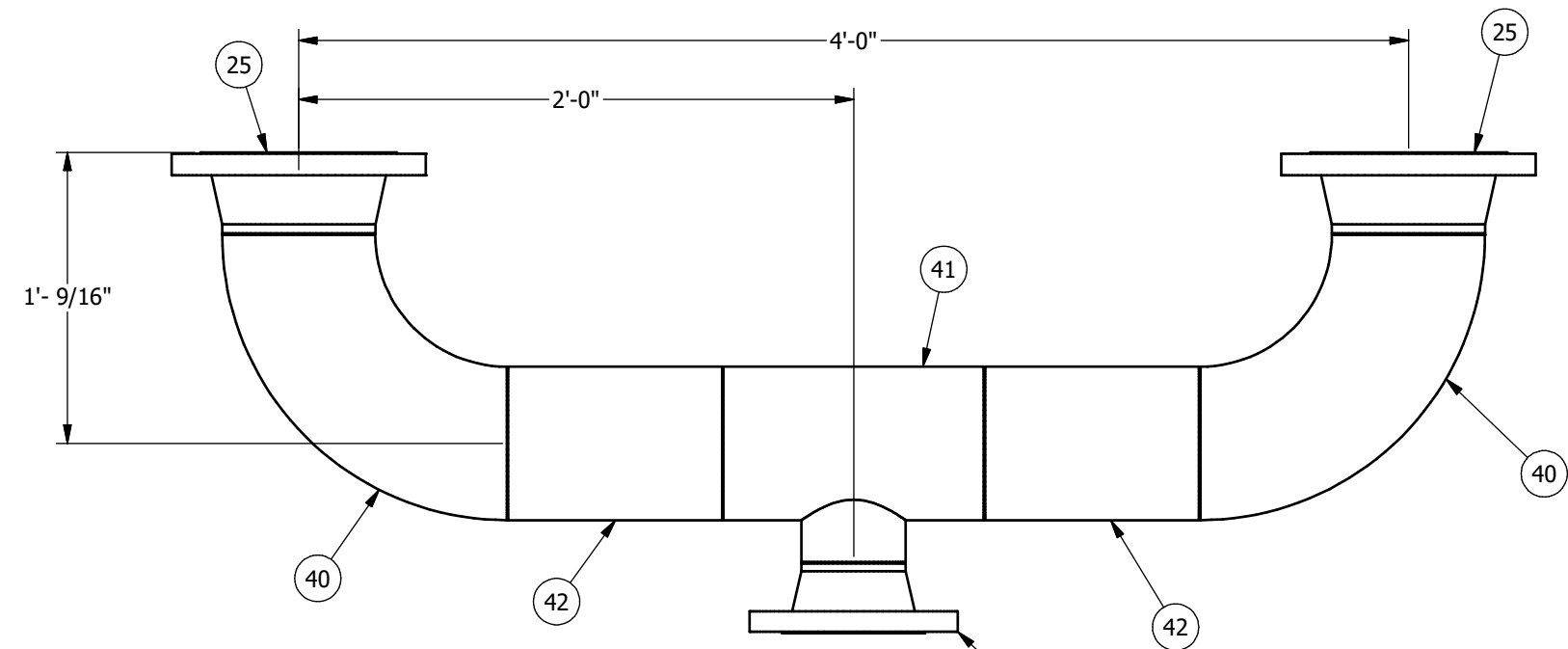
ITEM	QTY	DESCRIPTION	LENGTH
25	2	FLANGE: 6" CL150 RFWN, SCH STD, ASME SA-105, ASME B16.5	
39	1	FLANGE: 4" CL150 RFWN, SCH STD, ASME SA-105, ASME B16.5	
40	2	ELBOW: 6" SCH STD (0.28" WALL), 90 DEG, LR, BW, ASME SA-234 WPB, ASME B16.9	
41	1	REDUCING TEE: 6" SCH STD (0.28" WALL) X 4" SCH STD (0.237" WALL), BW, ASTM A-234 WPB, ASME B16.9	
42	2	PIPE: 6" SCH STD (0.28" WALL), ASTM A-106B, SMLS	9 1/4"

QTY-1

(B.O.M. IS FOR A QTY OF 1)

NOTES:

1. APPROX WEIGHT: 170 LBS
2. WPS 1A-17



ITEM 6
SCALE 1 / 8

REVISIONS

REV.	DESCRIPTION	BY	DATE
0	ISSUED FOR CONSTRUCTION	EE	

GENERAL TOLERANCES:
(UNLESS OTHERWISE SPECIFIED)
SINGLE PART FRACTIONAL: ±1/16"
FABRICATION FRACTIONAL STACK-UP:
0" - 48": ± 1/8"
48" - 96": ± 3/16"
OVER 96": ± 1/4"
ANGLES: ± 1/2°
WELD SIZES ARE MINIMUMS
DEBURR & BREAK SHARP EDGES

THIS DRAWING IS THE PROPERTY OF BLACKEAGLE FABRICATION LLC AND UNLESS GRANTED IN WRITING, DESIGN INFORMATION DISCLOSED WITHIN IS CONFIDENTIAL AND ALL RIGHTS, PATENTS AND OTHERWISE ARE RESERVED BY BLACKEAGLE FABRICATION LLC. DRAWINGS MUST BE SURRENDERED UPON REQUEST.
© ALL RIGHTS RESERVED.



230 COMMERCE DRIVE, BERTHOUD CO, 80513
PHONE: (970) 532-0600 - FAX: (970) 532-4846

DRAWING APPROVALS

	CLIENT	PROJECT MGR.	PROJECT ENG.	QUALITY CONTROL
APP'VD BY:				
DATE				

WATER STORAGE TANK

DRAWN DATE:	JOBBOSS #:	DRAWING #:	REV
6/9/2020	220150.11	220150 CS-101	0
DRAWN BY:	ENGINEER:	SHEET 5 OF 8	
E. ELLIS			

BILL OF MATERIAL

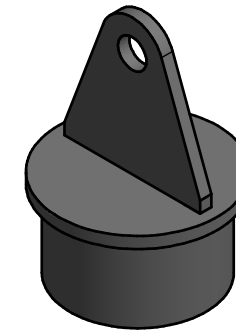
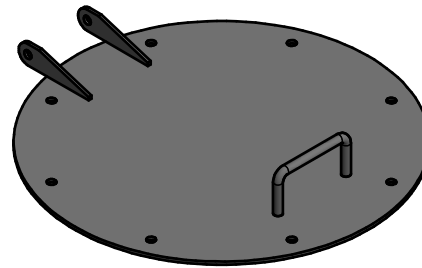
ITEM	QTY	DESCRIPTION
43	1	PLATE: 1/4", A-36, PER DETAIL
44	2	PLATE: 1/4", A-36, PER DETAIL
45	2	PLATE: 1/4", A-36, PER DETAIL
46	1	HANDLE: 5/8" DIA ROUND BAR, PER DETAIL

QTY-2

(B.O.M. IS FOR A QTY OF 1)

NOTES:

1. APPROX WEIGHT: 45 LBS
2. WPS 1A-17



BILL OF MATERIAL

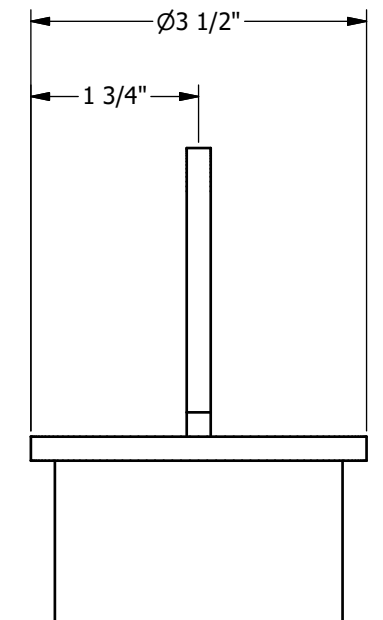
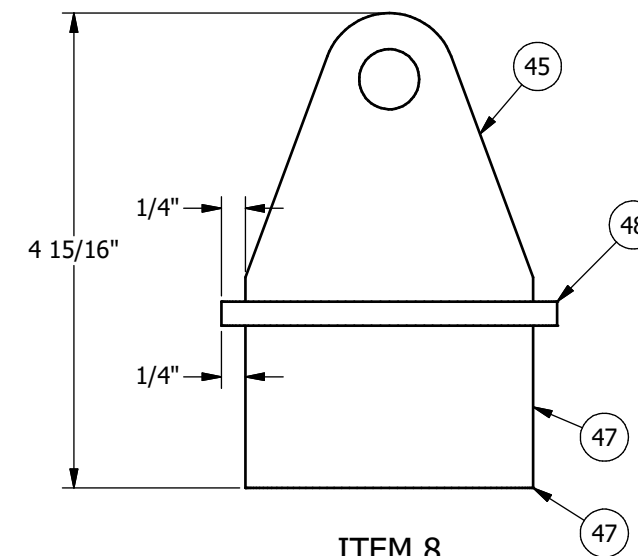
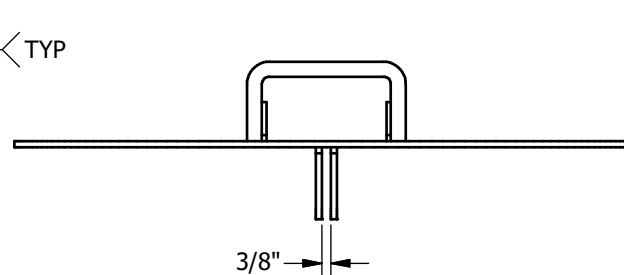
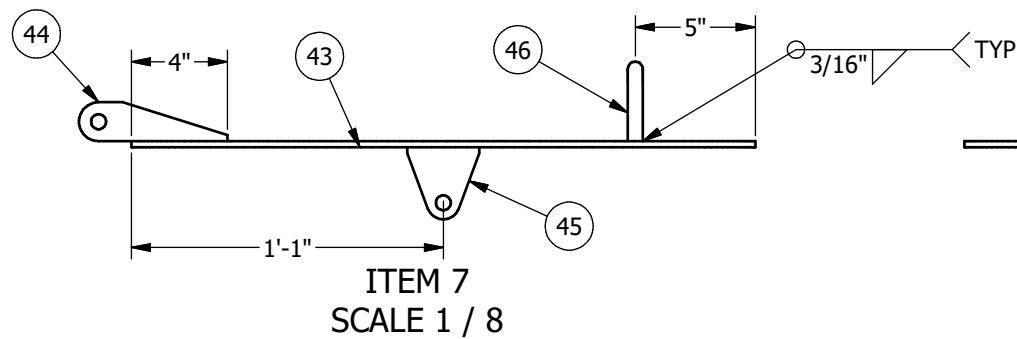
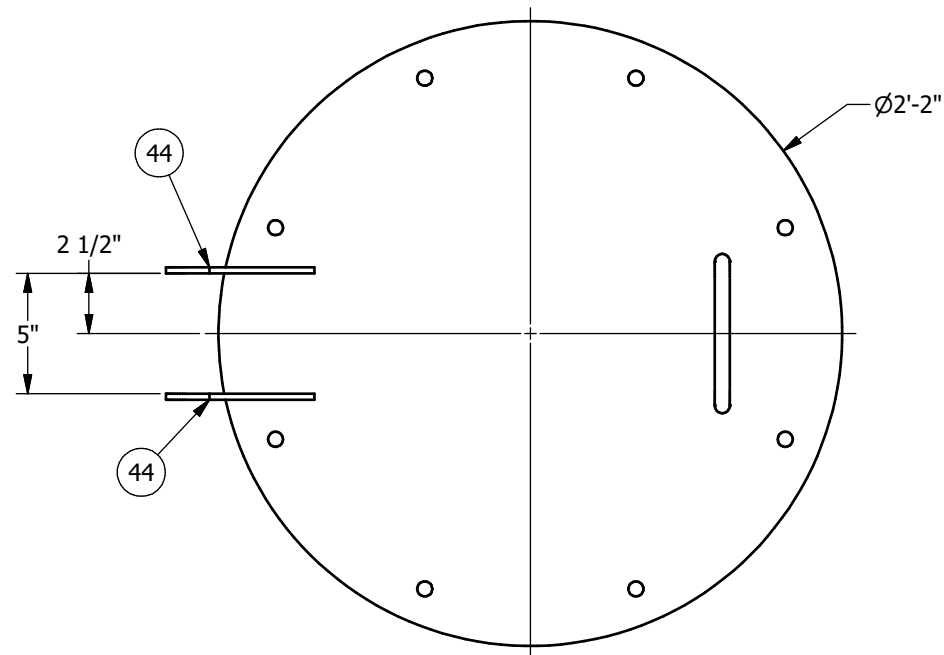
ITEM	QTY	DESCRIPTION
45	1	PLATE: 1/4", A-36, PER DETAIL
47	1	COUPLING: 2", HALF, 3000#, THREAD, ASME SA-105, ASME B16.11
48	1	PLATE: 1/4" X 3-1/2" OD, A-36

QTY-2

(B.O.M. IS FOR A QTY OF 1)

NOTES:

1. APPROX WEIGHT: 3 LBS
2. WPS 1A-17



REVISIONS

REV.	DESCRIPTION	BY	DATE
0	ISSUED FOR CONSTRUCTION	EE	

GENERAL TOLERANCES:
(UNLESS OTHERWISE SPECIFIED)
SINGLE PART FRACTIONAL: ±1/16"
FABRICATION FRACTIONAL STACK-UP:
0" - 48": ± 1/8"
48" - 96": ± 3/16"
OVER 96": ± 1/4"
ANGLES: ± 1/2°
WELD SIZES ARE MINIMUMS
DEBURR & BREAK SHARP EDGES

THIS DRAWING IS THE PROPERTY OF BLACKEAGLE FABRICATION LLC AND UNLESS GRANTED IN WRITING, DESIGN INFORMATION DISCLOSED WITHIN IS CONFIDENTIAL AND ALL RIGHTS, PATENTS AND OTHERWISE ARE RESERVED BY BLACKEAGLE FABRICATION LLC. DRAWINGS MUST BE SURRENDERED UPON REQUEST.
© ALL RIGHTS RESERVED.



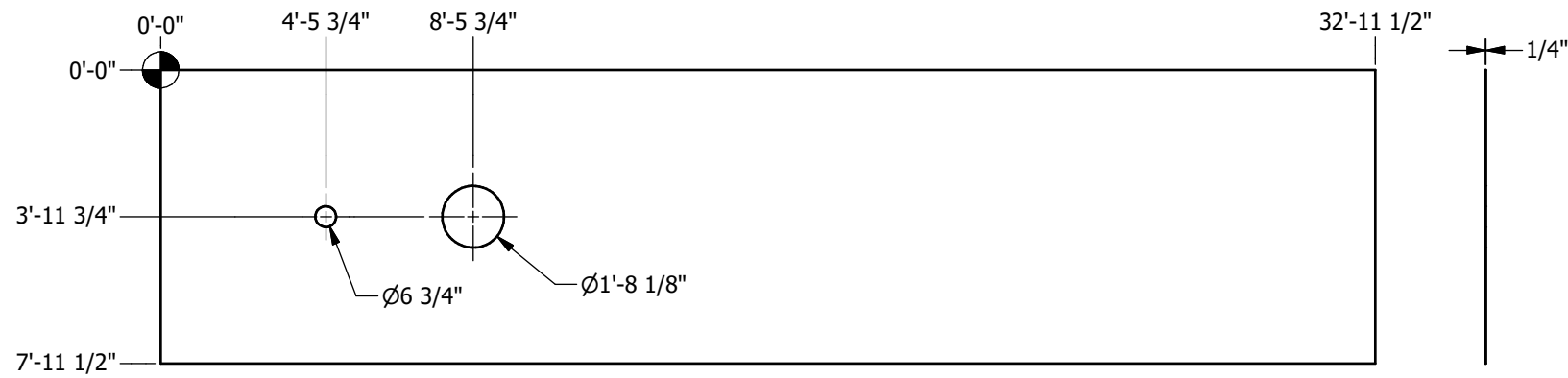
230 COMMERCE DRIVE, BERTHOUD CO, 80513
PHONE: (970) 532-0600 - FAX: (970) 532-4846

DRAWING APPROVALS

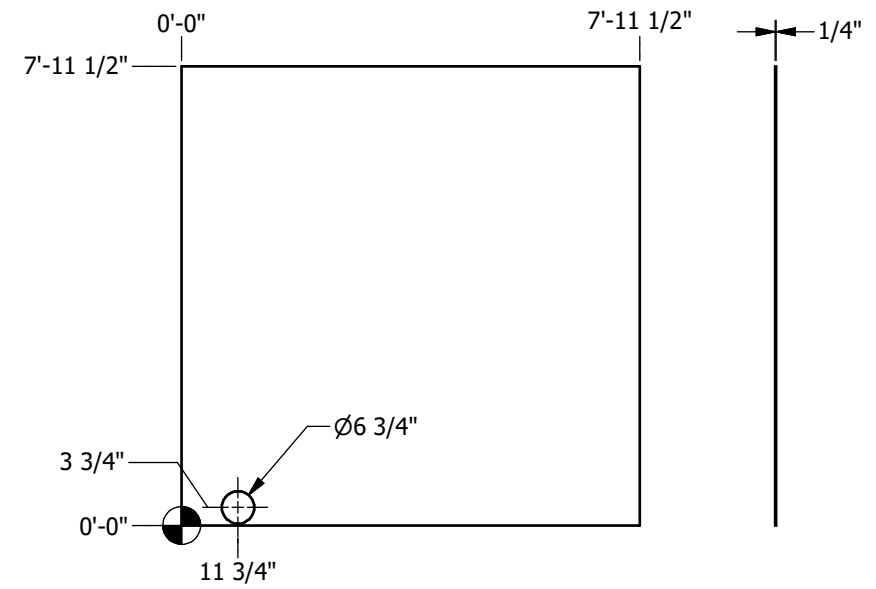
	CLIENT	PROJECT MGR.	PROJECT ENG.	QUALITY CONTROL
APPV'D BY:				
DATE				

WATER STORAGE TANK

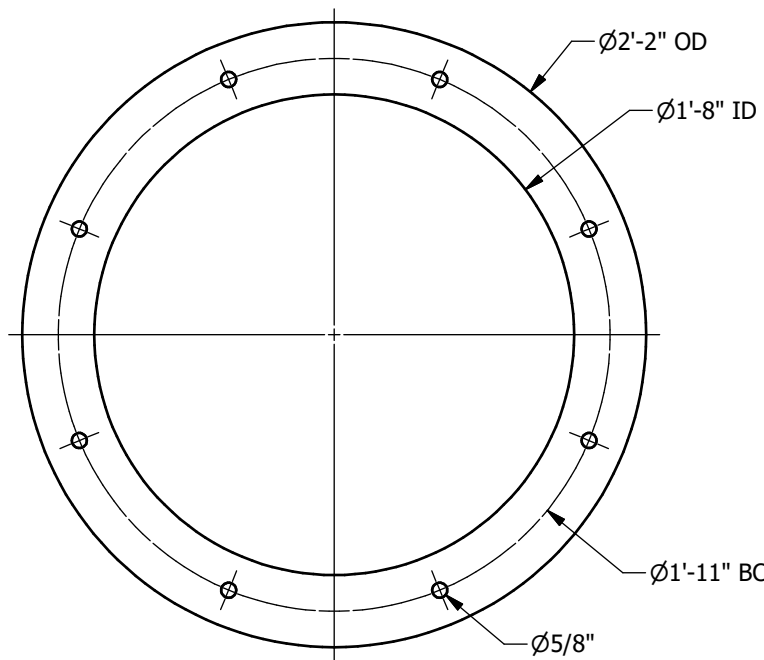
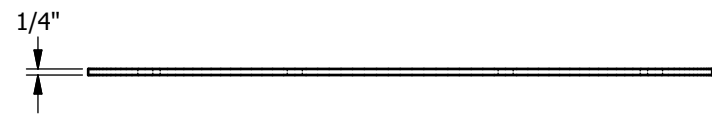
DRAWN DATE:	JOBBOSS #:	DRAWING #:	REV
6/9/2020	220150.11	220150 CS-101	0
DRAWN BY:	ENGINEER:	SHEET 6 OF 8	
E. ELLIS			



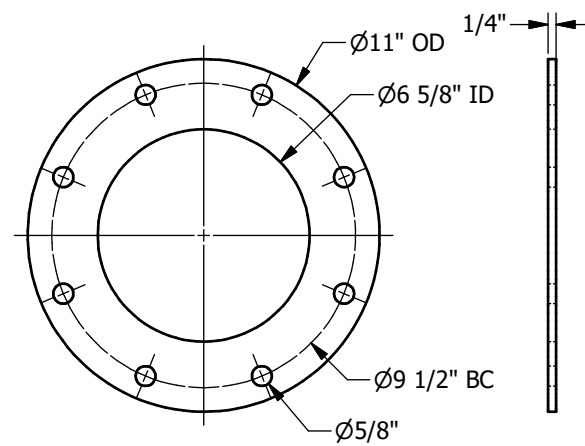
ITEM 15
SCALE 1 / 60



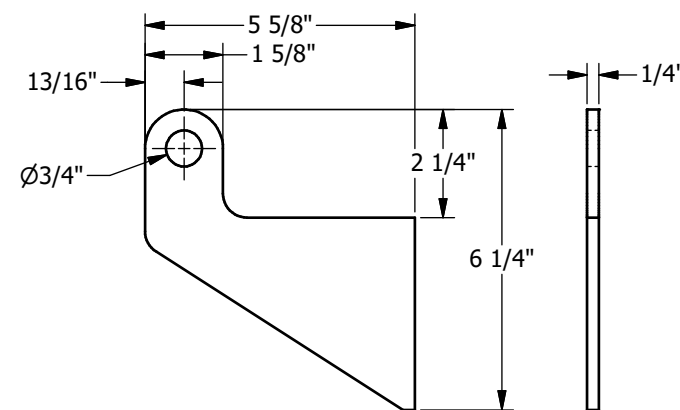
ITEM 18
SCALE 1 / 40



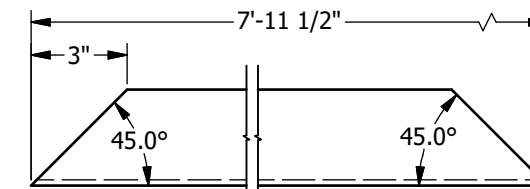
ITEM 19
SCALE 1 / 8



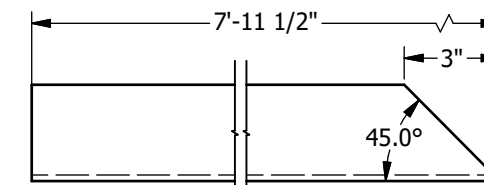
ITEM 20
SCALE 1 / 6



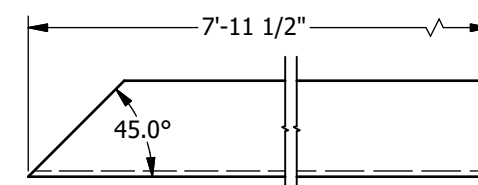
ITEM 21
SCALE 1 / 4



ITEM 22
SCALE 1 / 6



ITEM 23
SCALE 1 / 6



ITEM 24
SCALE 1 / 6

REVISIONS

REV.	DESCRIPTION	BY	DATE
0	ISSUED FOR CONSTRUCTION	EE	

GENERAL TOLERANCES:
(UNLESS OTHERWISE SPECIFIED)
SINGLE PART FRACTIONAL: ±1/16"
FABRICATION FRACTIONAL STACK-UP:
0" - 48": ± 1/8"
48" - 96": ± 3/16"
OVER 96": ± 1/4"
ANGLES: ± 1/2°
WELD SIZES ARE MINIMUMS
DEBURR & BREAK SHARP EDGES

THIS DRAWING IS THE
PROPERTY OF BLACKEAGLE
FABRICATION LLC AND
UNLESS GRANTED IN
WRITING, DESIGN
INFORMATION DISCLOSED
WITHIN IS CONFIDENTIAL
AND ALL RIGHTS, PATENTS
AND OTHERWISE ARE
RESERVED BY BLACKEAGLE
FABRICATION LLC.
DRAWINGS MUST BE
SURRENDERED UPON
REQUEST.
© ALL RIGHTS RESERVED.



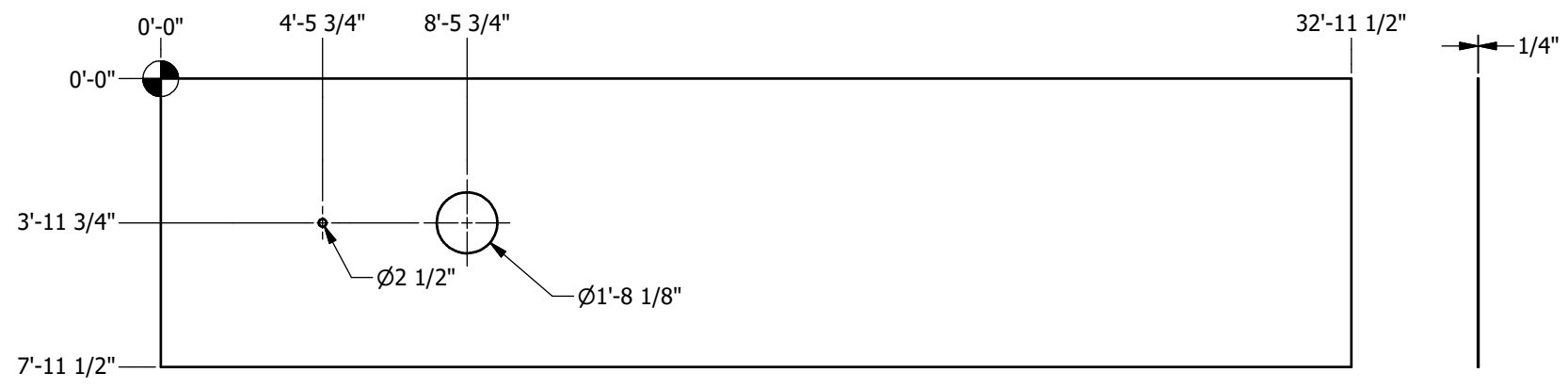
230 COMMERCE DRIVE, BERTHOUD CO, 80513
PHONE: (970) 532-0600 - FAX: (970) 532-4846

DRAWING APPROVALS

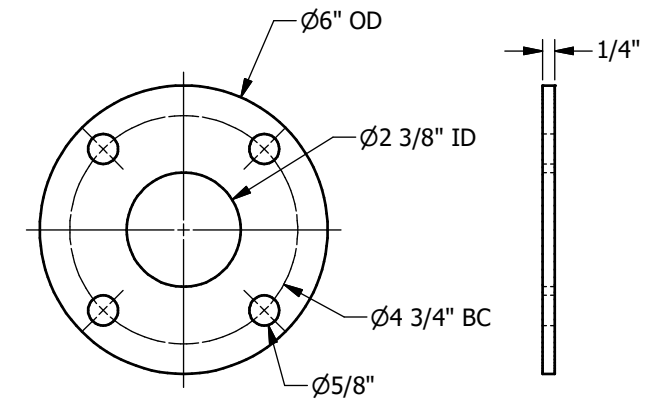
APPVD BY:	CLIENT	PROJECT MGR.	PROJECT ENG.	QUALITY CONTROL
DATE				

WATER STORAGE TANK

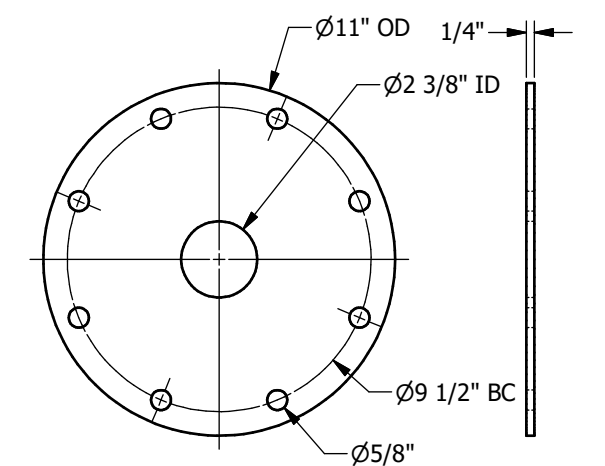
DRAWN DATE:	JOBBOSS #:	DRAWING #:	REV
6/9/2020	220150.11	220150 CS-101	0
DRAWN BY:	E. ELLIS	ENGINEER:	SHEET 7 OF 8



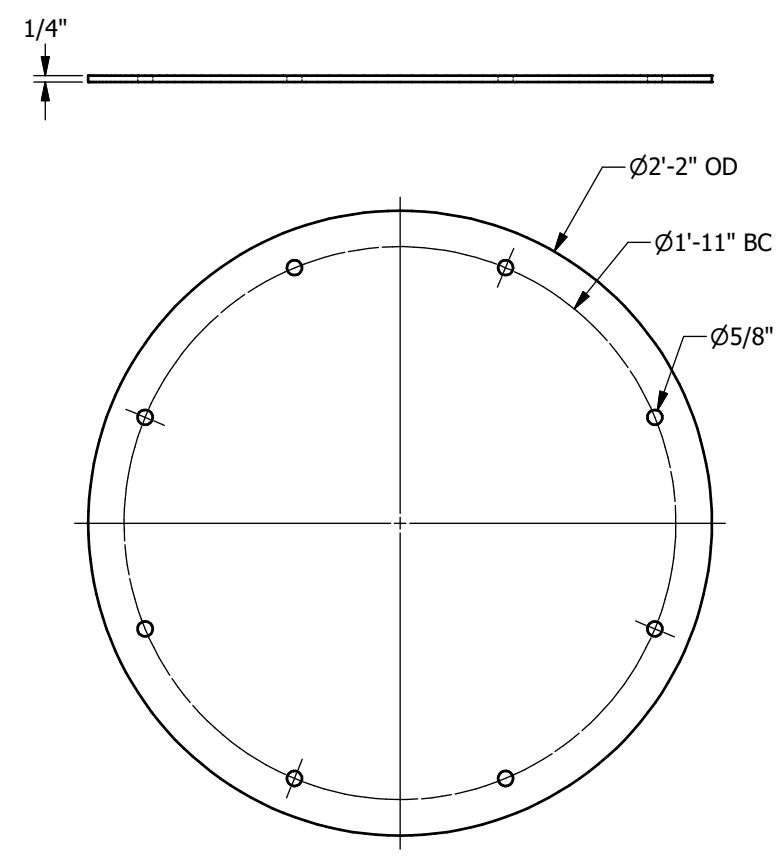
ITEM 31
SCALE 1 / 60



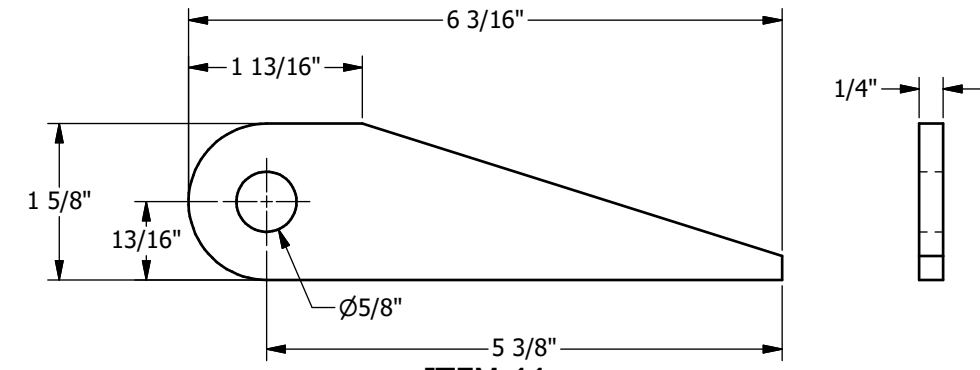
ITEM 32
SCALE 1 / 4



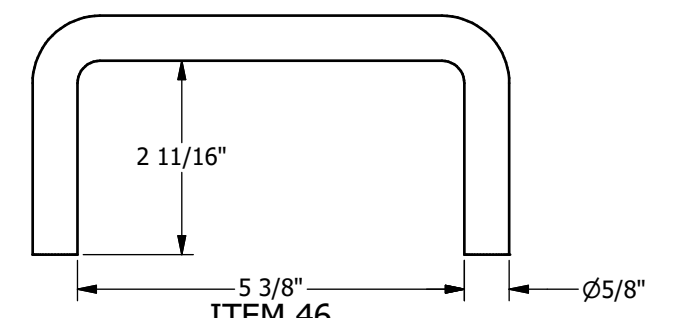
ITEM 34
SCALE 1 / 6



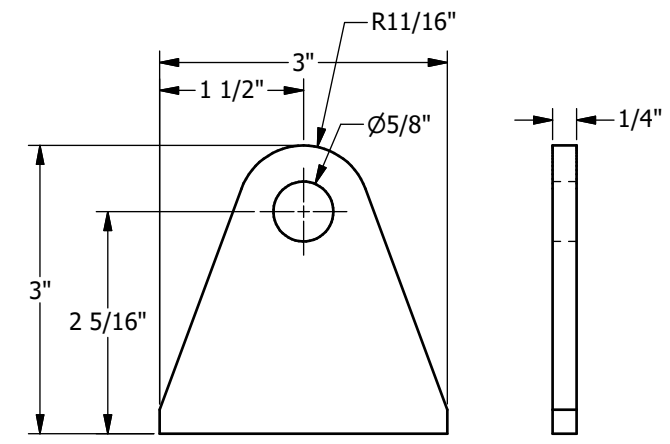
ITEM 43
SCALE 1 / 8



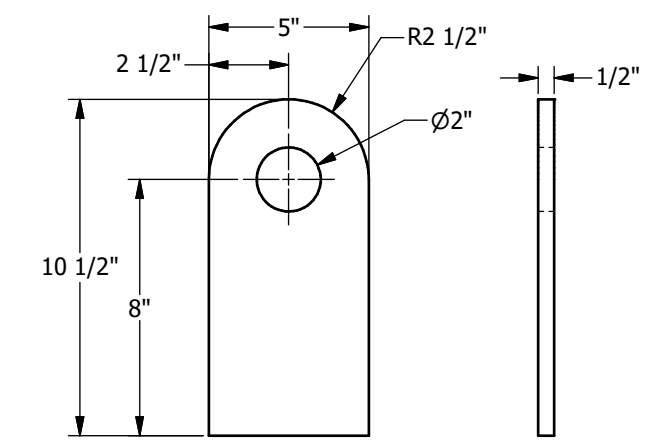
ITEM 44
SCALE 1 / 2



ITEM 46
SCALE 3 / 8



ITEM 45
SCALE 1 / 2



ITEM 29
SCALE 1 / 6

REVISIONS

REV.	DESCRIPTION	BY	DATE
0	ISSUED FOR CONSTRUCTION	EE	

GENERAL TOLERANCES:
(UNLESS OTHERWISE SPECIFIED)
SINGLE PART FRACTIONAL: ±1/16"
FABRICATION FRACTIONAL STACK-UP:
0" - 48": ± 1/8"
48" - 96": ± 3/16"
OVER 96": ± 1/4"
ANGLES: ± 1/2°
WELD SIZES ARE MINIMUMS
DEBURR & BREAK SHARP EDGES

THIS DRAWING IS THE PROPERTY OF BLACKEAGLE FABRICATION LLC AND UNLESS GRANTED IN WRITING, DESIGN INFORMATION DISCLOSED WITHIN IS CONFIDENTIAL AND ALL RIGHTS, PATENTS AND OTHERWISE ARE RESERVED BY BLACKEAGLE FABRICATION LLC. DRAWINGS MUST BE SURRENDERED UPON REQUEST.
© ALL RIGHTS RESERVED.

BLACKEAGLE
FABRICATION, LLC

230 COMMERCE DRIVE, BERTHOUD CO, 80513
PHONE: (970) 532-0600 - FAX: (970) 532-4846

DRAWING APPROVALS				
APPV'D BY:	CLIENT	PROJECT MGR.	PROJECT ENG.	QUALITY CONTROL
DATE				

WATER STORAGE TANK				
DRAWN DATE:	JOBBOSS #:	DRAWING #:	REV	
6/9/2020	220150.11	220150 CS-101	0	
DRAWN BY:	ENGINEER:	SHEET	OF	
E. ELLIS		8	8	