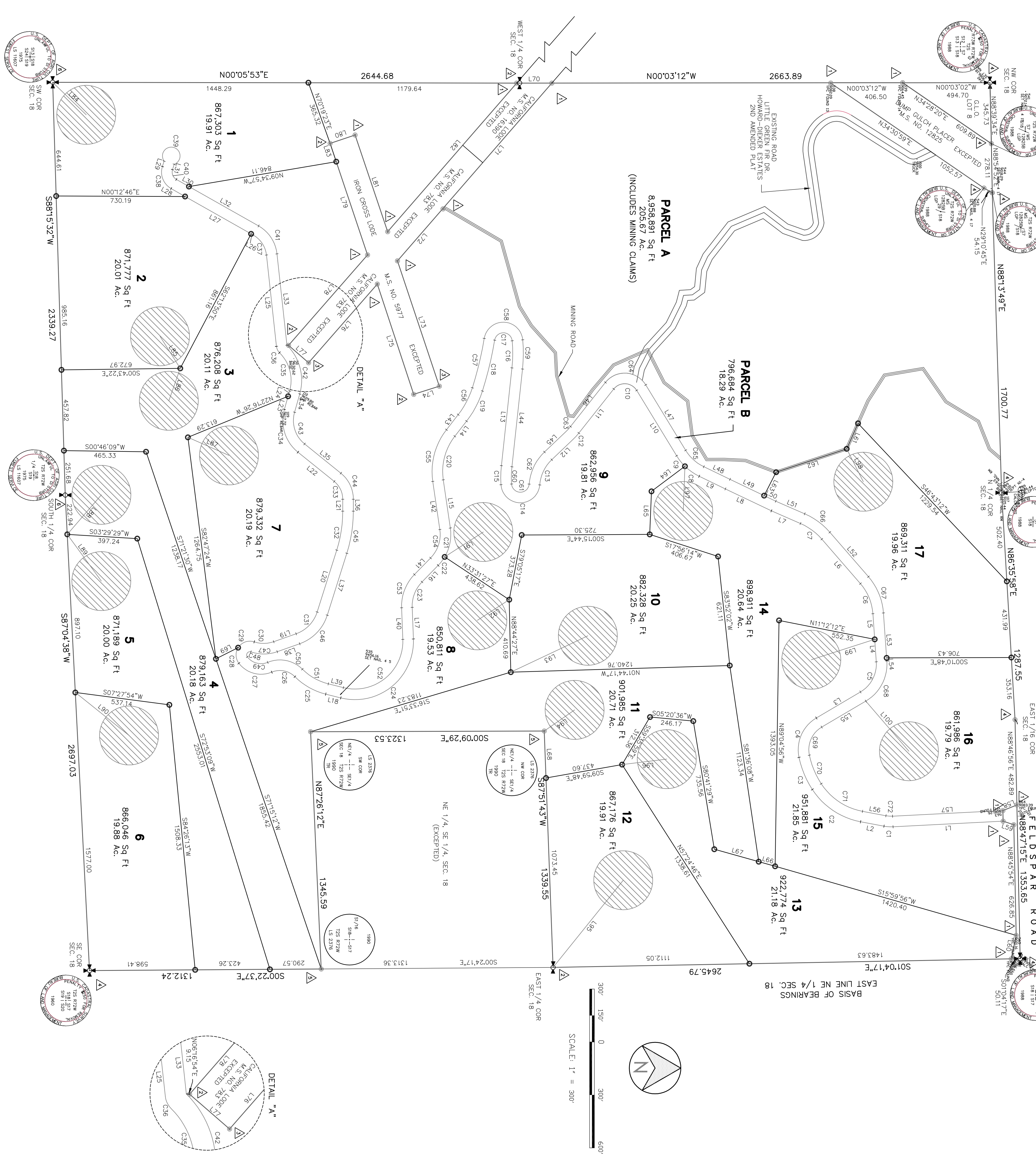


# ROOSEVELT RIDGE EXEMPTION PLAT

FINAL PLAT  
SITUATED IN SECTION 18,  
TOWNSHIP 2 SOUTH, RANGE 72 WEST OF THE SIXTH PRINCIPAL MERIDIAN,  
COUNTY OF GILPIN, STATE OF COLORADO  
SHEET 2 OF 2



867,303 Sq Ft  
19.91 Ac.  
871,777 Sq Ft  
20.01 Ac.  
876,208 Sq Ft  
20.11 Ac.  
879,532 Sq Ft  
20.19 Ac.  
871,189 Sq Ft  
20.00 Ac.  
866,046 Sq Ft  
19.88 Ac.  
879,163 Sq Ft  
20.18 Ac.  
879,176 Sq Ft  
19.91 Ac.  
882,328 Sq Ft  
20.25 Ac.  
882,956 Sq Ft  
19.81 Ac.  
796,684 Sq Ft  
18.29 Ac.  
889,311 Sq Ft  
19.96 Ac.  
861,986 Sq Ft  
19.79 Ac.  
951,881 Sq Ft  
21.85 Ac.  
922,774 Sq Ft  
21.18 Ac.

CURVE	DELTA	LENGTH	RADIUS	CHORD	BEARING	CHORD
C1	13.3301°	51.56	218.01	53.03	S103°51'25.5"E	51.44
C2	46.1729°	337.89	418.19	533.46	S45°45'45"W	368.78
C3	21.0302°	198.03	539.01	56.72	S7°27'04"W	196.92
C4	71.3138°	260.69	208.82	166.15	S61°19'38"W	244.09
C5	6.393345°	203.33	183.58	183.58	S61°16'45"W	193.05
C6	36.5371°	187.65	274.49	351.29	S47°42'42"W	188.43
C7	18.3429°	98.98	305.30	339.02	S45°22'46"W	98.24
C8	14.1704°	76.11	305.30	551.88	S45°22'46"W	75.92
C9	10.1510°	52.83	79.42	503.29	S30°29'30"W	130.22
C10						
C11						
C12	8.0470°	49.58	352.09	547.95	S73°35'57"E	49.54
C13	32.1744°	161.93	221.15	347.32	S45°26'27"E	218.23
C14	17.1147°	308.10	650.82	108.10	N88°49'07"W	107.96
C15	9.5845°	153.75	770.00	169.33	S63°32'02"W	153.49
C16	11.2623°	153.75	770.00	169.33	S63°32'02"W	153.49
C17	16.5125°	144.18	500.00	502.06	S30°06'33"W	99.17
C18	8.0214°	296.39	212.94	576.93	S76°59'11"E	296.15
C19	20.2918°	194.32	545.50	568.15	S45°15'27"E	193.30
C20	36.5371°	266.52	266.65	351.29	S47°42'42"E	188.43
C21	13.4943°	60.54	250.82	552.33	S72°44'42"E	60.54
C22	46.3407°	198.54	195.65	568.55	S45°32'32"E	154.21
C23	10.6153°	64.11	311.13	539.04	S73°35'57"E	529.81
C24	6.72524°	244.49	119.94	511.09	S29°29'57"W	200.65
C25	6.31403°	94.28	178.12	631.18	S73°18'07"W	94.28
C26	76.4421°	104.58	78.12	109.44	N19°44'44"W	96.95
C27	38.0532°	112.46	169.16	140.26	N00°26'06"W	110.40
C28	32.2952°	112.46	169.16	140.26	N00°26'06"W	110.40
C29	17.2834°	264.32	735.45	544.23	N81°12'12"E	223.45
C30	5.1227°	215.59	129.53	544.23	S44°23'32"W	211.28
C31	6.1227°	215.59	129.53	544.23	S44°23'32"W	211.28
C32	6.1227°	215.59	129.53	544.23	S44°23'32"W	211.28
C33	6.1227°	215.59	129.53	544.23	S44°23'32"W	211.28
C34	6.1227°	215.59	129.53	544.23	S44°23'32"W	211.28
C35	6.1227°	215.59	129.53	544.23	S44°23'32"W	211.28
C36	6.1227°	215.59	129.53	544.23	S44°23'32"W	211.28
C37	6.1227°	215.59	129.53	544.23	S44°23'32"W	211.28
C38	6.1227°	215.59	129.53	544.23	S44°23'32"W	211.28
C39	6.1227°	215.59	129.53	544.23	S44°23'32"W	211.28
C40	6.1227°	215.59	129.53	544.23	S44°23'32"W	211.28
C41	6.1227°	215.59	129.53	544.23	S44°23'32"W	211.28
C42	6.1227°	215.59	129.53	544.23	S44°23'32"W	211.28
C43	6.1227°	215.59	129.53	544.23	S44°23'32"W	211.28
C44	6.1227°	215.59	129.53	544.23	S44°23'32"W	211.28
C45	6.1227°	215.59	129.53	544.23	S44°23'32"W	211.28
C46	6.1227°	215.59	129.53	544.23	S44°23'32"W	211.28
C47	6.1227°	215.59	129.53	544.23	S44°23'32"W	211.28
C48	6.1227°	215.59	129.53	544.23	S44°23'32"W	211.28
C49	6.1227°	215.59	129.53	544.23	S44°23'32"W	211.28
C50	6.1227°	215.59	129.53	544.23	S44°23'32"W	211.28
C51	6.1227°	215.59	129.53	544.23	S44°23'32"W	211.28
C52	6.1227°	215.59	129.53	544.23	S44°23'32"W	211.28
C53	6.1227°	215.59	129.53	544.23	S44°23'32"W	211.28
C54	6.1227°	215.59	129.53	544.23	S44°23'32"W	211.28
C55	6.1227°	215.59	129.53	544.23	S44°23'32"W	211.28
C56	6.1227°	215.59	129.53	544.23	S44°23'32"W	211.28
C57	6.1227°	215.59	129.53	544.23	S44°23'32"W	211.28
C58	6.1227°	215.59	129.53	544.23	S44°23'32"W	211.28
C59	6.1227°	215.59	129.53	544.23	S44°23'32"W	211.28
C60	6.1227°	215.59	129.53	544.23	S44°23'32"W	211.28
C61	6.1227°	215.59	129.53	544.23	S44°23'32"W	211.28
C62	6.1227°	215.59	129.53	544.23	S44°23'32"W	211.28
C63	6.1227°	215.59	129.53	544.23	S44°23'32"W	211.28
C64	6.1227°	215.59	129.53	544.23	S44°23'32"W	211.28
C65	6.1227°	215.59	129.53	544.23	S44°23'32"W	211.28
C66	6.1227°	215.59	129.53	544.23	S44°23'32"W	211.28
C67	6.1227°	215.59	129.53	544.23	S44°23'32"W	211.28
C68	6.1227°	215.59	129.53	544.23	S44°23'32"W	211.28
C69	6.1227°	215.59	129.53	544.23	S44°23'32"W	211.28
C70	6.1227°	215.59	129.53	544.23	S44°23'32"W	211.28
C71	6.1227°	215.59	129.53	544.23	S44°23'32"W	211.28
C72	6.1227°	215.59	129.53	544.23	S44°23'32"W	211.28

LINE	LENGTH	BEARING
L1	134.91	S03°55'04"E
L2	699.87	S07°37'55"W
L3	127.52	S30°29'50"W
L4	187.52	S89°56'20"W
L5	333.49	S44°00'06"W
L6	238.66	S77°42'42"W
L7	1834.29	S39°02'41"W
L8	164.77	S25°22'46"W
L9	433.84	S59°37'00"W
L10	105.15	S03°29'30"W
L11	316.78	S15°06'01"E
L12	368.33	S43°33'52"E
L13	502.02	N82°44'59"E
L14	171.14	S45°26'27"E
L15	275.47	N88°49'07"W
L16	131.30	S45°32'02"E
L17	179.02	N87°42'23"E
L18	88.06	S14°02'55"W
L19	134.76	N19°31'27"W
L20	367.67	N12°12'55"W
L21	264.08	S72°44'42"E
L22	77.02	S52°33'17"E
L23	526.10	N74°02'01"W
L24	308.33	S69°46'10"W
L25	920.51	S29°29'57"W
L26	149.7	S29°29'57"W
L27	425.97	S45°26'27"E
L28	631.18	S73°18'07"W
L29	32.22	N19°44'44"W
L30	81.97	N00°26'06"W
L31	32.22	S72°34'48"E
L32	453.34	N89°29'57"E
L33	520.27	N89°46'10"E
L34	82.48	S73°35'57"E
L35	67.55	S89°56'20"E
L36	367.67	S89°56'20"E
L37	67.55	S72°44'42"E
L38	134.81	S19°31'27"E
L39	88.06	N14°08'55"E
L40	179.02	S87°42'23"E
L41	275.47	N82°44'59"E
L42	275.47	N82°44'59"E
L43	108.50	N82°44'59"E
L44	108.50	N82°44'59"E
L45	165.78	N81°33'52"E
L46	316.30	N81°33'52"E
L47	433.84	N81°33'52"E
L48	71.81	N82°44'59"E
L49	71.81	N82°44'59"E
L50	71.81	N82°44'59"E
L51	178.80	N82°44'59"E
L52	333.49	N49°03'06"E
L53	255.04	N89°56'20"E
L54	179.96	N89°56'20"E
L55	134.91	N89°56'20"E
L56	134.91	N89°56'20"E
L57	62.60	N02°55'04"W
L58	65.32	N81°50'01"W
L59	63.83	N81°41'28"E
L60	135.62	S70°05'03"E
L61	135.62	N66°06'24"W
L62	135.62	N66°06'24"W
L63	143.10	N62°56'32"W
L64	236.77	N62°56'32"W
L65	244.09	N87°41'35"W
L66	96.87	S19°40'24"W
L67	66.50	S19°40'24"W
L68	66.50	S19°40'24"W
L69	199.81	N00°01'31"E
L70	199.81	N00°01'31"E
L71	961.40	S49°01'24"E
L72	372.33	S49°01'24"E
L73	748.54	N1°19'03"E
L74	132.19	S17°39'55"E
L75	132.19	S17°39'55"E
L76	150.08	S44°58'30"W
L77	150.08	S44°58'30"W
L78	679.99	N48°51'28"E
L79	666.11	S73°28'42"W
L80	146.11	N89°35'40"W
L81	97.782	N17°01'20"E
L82	110.82	N17°01'20"E
L83	264.63	N44°11'27"E
L84	264.63	S57°45'29"W
L85	194.90	S73°35'57"E
L86	254.21	N23°46'12"E
L87	254.21	N23°46'12"E
L88	255.82	N49°11'12"E
L89	389.42	N38°41'31"E
L90	260.42	N32°50'19"E
L91	215.07	S32°57'11"E
L92	482.60	N28°17'34"W
L93	482.60	N28°17'34"W
L94	209.58	N34°55'57"W
L95	633.63	N51°48'48"W
L96	633.63	N51°48'48"W
L97	253.63	S87°50'27"E
L98	208.75	N63°09'03"E
L99	377.33	S17°48'29"E
L100	374.58	N49°17'43"E

ROOSEVELT RIDGE EXEMPTION PLAT  
APPLICANT & DEVELOPER:  
ROOSEVELT RIDGE, LLC  
7105 QUIET RETREAT CT  
NMON, CO 80503  
P10720331-0330  
SURVEYOR:  
FRONTIER SURVEYING, INC.  
332 NORFOLK STREET  
AURORA, CO 80011  
PH: 303-340-0113  
SHEET 2 OF 2